

COMSA 006

COMBINATION VALVES

- CE, CSA Approved
- 150mbar (40") WG Max. Pressure
- 1/2psi Maximum Inlet Pressure
- Temperature Differential $\pm 10^{\circ}\text{C}$ ($\pm 18^{\circ}\text{F}$)
- -14°C - 120°C Ambient Temperature (10°F - 250°F)
- Universal Mounting Positions
- Switch Available for Electronic Ignition
- Suitable for Natural, Towns and LPG Gases
- Standard Knob Available



COMSA006R

Application

The Teddington Appliance Controls Combustion Valve combines a tap, flame safety device and precision thermostatic gas control. With CSA and CE approval, the control is designed to function on a wide range of catering appliances.

Physical Description

The COMSA body is constructed of aluminium or aluminium and brass, depending on type, and is connected to the sensor by a copper capillary.

COMSA's are available with inlet, outlet and pilot arrangement to suit virtually all-standard appliances, connections are illustrated overleaf.

Capillary lengths: 762, 1219 and 1651mm

Operation

This consists of pushing the spindle in to clear the seating followed by rotation to the ignition position. The spindle is then pushed in to allow gas to the pilot. The temperature settings are obtained by further rotation of the spindle.

Operating times

Opening 20sec. maximum (depending upon application)
Closing 60sec. maximum (depending upon application)

Maximum Pilot Temperature

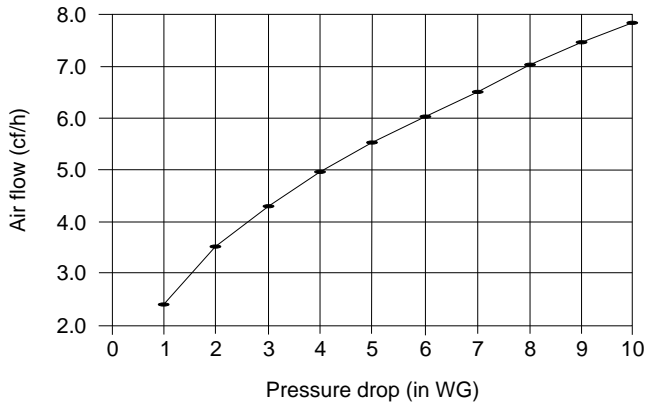
315°C (600°F) cooking version
 60°C (140°F) space heating version



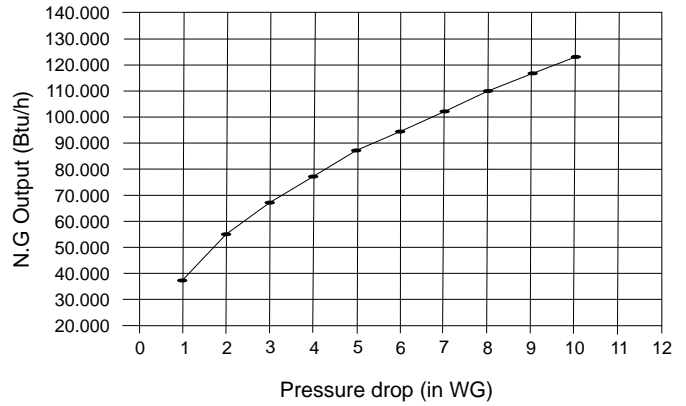
COMSA006 Models

	Connections		Pilot	Magnet nut	Rated air flow at 2.5mbar pressure	By-pass FLOW	Ambient temp	Gas types
	Inlet	Outlet 1						
COMSA006-F	FLANGE MOUNT	1/4NPT	1/8 NPTF	11/32-2 START	0.9m³/hr	33-39l/hr AIR @20mbar	-10 to 120°C	1st 2nd & 3rd family
COMSA006-K	FLANGE MOUNT	1/4 NPT	1/8 NPTF	11/32-2 START	0.9m³/hr	52-58l/hr AIR @20mbar	-10 to 120°C	
COMSA006-PL	1/8 NPT	1/4 NPT	1/8 NPTF	11/32-2 START	0.9m³/hr	52-58l/hr AIR @20mbar	-10 to 120°C	
COMSA006-Q	1/8 NPT	1/4 NPT	N/A	N/A	0.9m³/hr	115-125l/hr AIR @20mbar	-10 to 120°C	
COMSA006-R	FLANGE MOUNT	1/8 NPT	N/A	N/A	0.9m³/hr	330+/-6% l/hr AIR @20mbar	-10 to 120°C	
COMSA006-T	1/4 NPT	1/4 NPT	1/8 NPTF	11/32-2 START	0.9m³/hr	52-58l/hr AIR @20mbar	-10 to 120°C	

Graph to show varied inlet pressure vs flow

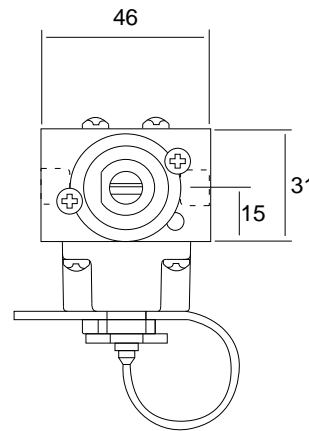
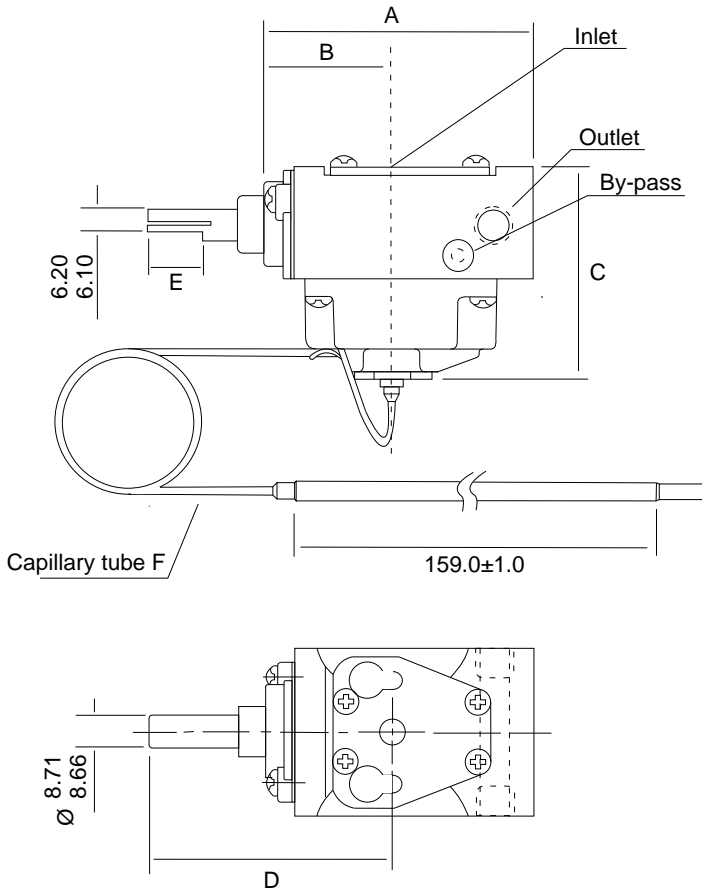


Btu/hvs pressure drop



Model shown COMSA006R

(Note: inlet, outlet and pilot positions vary according to model. Please contact a sales representative for further details)



	Dimension					
	A	B	C	D	E	F
COMSA 006F	99	35	60	77.9	19	1651
COMSA 006K	99	35	60	79.4	19	1219.2
COMSA 006PL	98.6	34.9	59.2	67.5	15	762
COMSA 006Q	73.6	34.9	59.2	63.5	15	762
COMSA 006R	73.6	34.9	59.2	66.7	15	762
COMSA 006T	99	75.4	66	62.5		

Dimensions in mm unless shown otherwise



TEDDINGTON APPLIANCE CONTROLS LTD

Part of the TEDDINGTON GROUP

Holmush · St. Austell · Cornwall · United Kingdom · PL23 3HG

Tel: +44 (0) 1726 74400 · Fax: +44 (0) 1726 67953

www.tedcon.com · info@tedcon.com

08/08



FM 1790